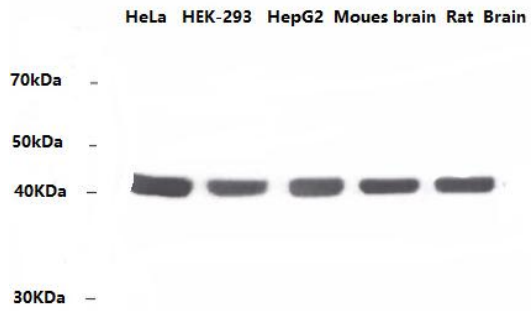


Anti-beta Actin Mouse Monoclonal antibody  
Catalog Number:NL25200

## Product Description

Description	Anti-beta Actin Mouse Monoclonal antibody
Another Name	Anti-beta Actin Mouse Monoclonal antibody
Catalog Number	NL25200
Size:	100 $\mu$ l
Tested Applications:	WB ,
Cited Applications:	WB. IHC IF
Tested Reactivity:	Human , mouse Rat
Cited Reactivity:	Human , mouse Rat
Gene Symbol:	ACTB, Actin, actin, beta, Actin, cytoplasmic 1, B actin, Beta actin, F actin, PS1TP5BP1, $\beta$ actin
Immunogen :	A Synthetic peptide from human beta-Actin
Concentration:	1mg/ml
Host/Isotype:	mouse/IgG
Class:	monoclonal
Type:	Antibody
Predictedmv:	42KDa
Observed mv:	42KDa
Uniprot:	P60709
Constituents:	PBS (without Mg <sup>2+</sup> and Ca <sup>2+</sup> ), pH 7.4, 150 mM NaCl, 50% glycerol
Storage Conditions:	Store at -20°C for one year after shipment
Background:	Actins are highly conserved proteins that are involved in various types of cell motility and are ubiquitously expressed in all eukaryotic cells. In vertebrates 3 main groups of actin isoforms, alpha, beta and gamma have been identified. The alpha actins are found in muscle tissues and are a major constituent of the contractile apparatus. The beta and gamma actins coexist in most cell types as components of the cytoskeleton and as mediators of internal cell motility.

## Tested Applications: WB



Various Samples (25ug) were subjected to SDS PAGE followed by western blot with Anti-beta Actin antibody ( NL25200 ) at dilution of 1:3000